



For low drain/long term operating applications requesting. Good voltage response in  $-55^{\circ}\text{C} \sim 125^{\circ}\text{C}$  environments, such as: TPMS(Tire Pressure Monitor System).

## ER1860

Lithium-thionyl Chloride  
(Li-SOCl<sub>2</sub>) Battery

### KEY FEATURES

- ✓ High and stable operating voltage
- ✓ High minimum voltage during pulsing
- ✓ Low self discharge rate (less than 1% after 1 year of storage at  $+25^{\circ}\text{C}$ )
- ✓ Stainless steel container
- ✓ Hermetic glass-to-metal sealing
- ✓ Non-flammable electrolyte
- ✓ Non-restricted for transport
- ✓ Compliant with IEC 86-4 safety standard and EN 50020 intrinsic safety
- UL Underwriters Laboratories (UL) Component Recognition (File Number MH28717)

### MAIN APPLICATIONS

- ✓ Utility metering
- ✓ Alarms and security devices
- ✓ Memory back-up
- ✓ Tracking systems
- ✓ Automotive electronics
- ✓ Professional electronics ... etc.

## ELECTRICAL CHARACTERISTICS

(typical values for cells stored for one year or less, at  $25^{\circ}\text{C}$ )

Nominal capacity	0.28Ah
(At 1.0 mA, $+25^{\circ}\text{C}$ , 2.0V cut off. The capacity restored by the cell varies according to current drain, temperature and cut off voltage.)	
Nominal voltage	3.6V
Maximum recommended continuous current	5mA
(To get 50% of the nominal capacity at $+25^{\circ}\text{C}$ with 2.0V cut off. Higher currents possible, consult EVE.)	
Maximum pulse current capability	20mA
Rated 1 sec. pulse capability(to 3V)	10mA
Pulse capability varies according to pulse characteristics (frequency and duration), temperature, cell history (storage conditions prior to usage) and the application's acceptable minimum voltage.	
Storage (recommended)	$30^{\circ}\text{C}$ max
(for more severe condition consult EVE)	
Operating temperature range	$-60^{\circ}\text{C}/+125^{\circ}\text{C}$
(Operation at temperature different from ambient may lead to reduced capacity and lower voltage plateau readings.)	
Typical weight	5.5g

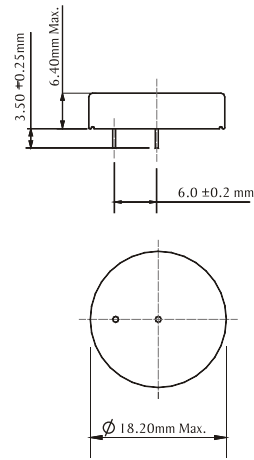
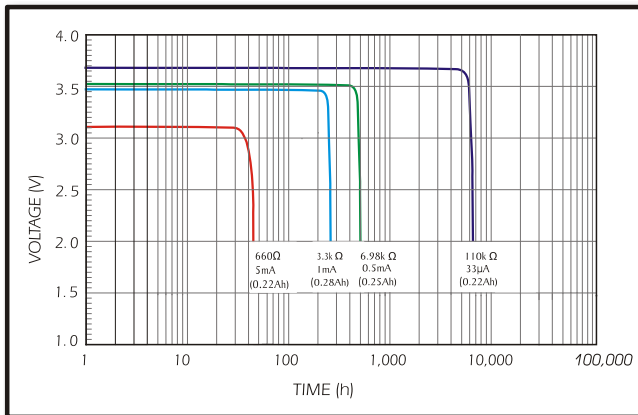
### WARNING:

Fire, explosion and severe burn hazard. Do not recharge, crush, disassemble, heat above  $100^{\circ}\text{C}$ , incinerate, or expose contents to water.

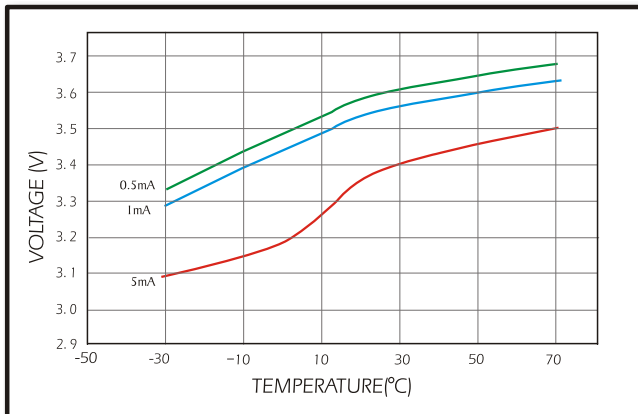
Note: Any representations in this data sheet concerning performance are for informational purpose only and are not construed as warranties, either expressed or implied, of future performance.

# ER1860

## 1. DISCHARGE CHARACTERISTICS @ +25°C



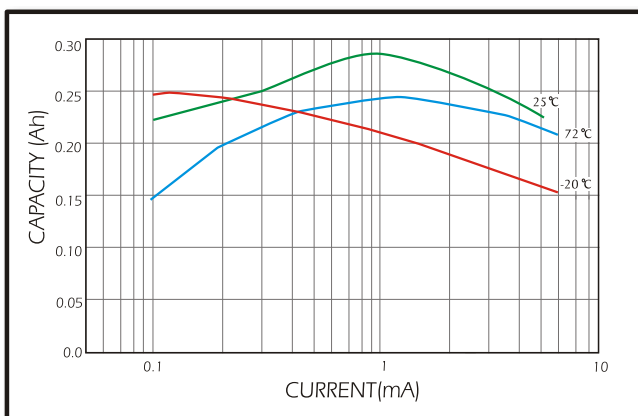
## 2. VOLTAGE VS. TEMPERATURE



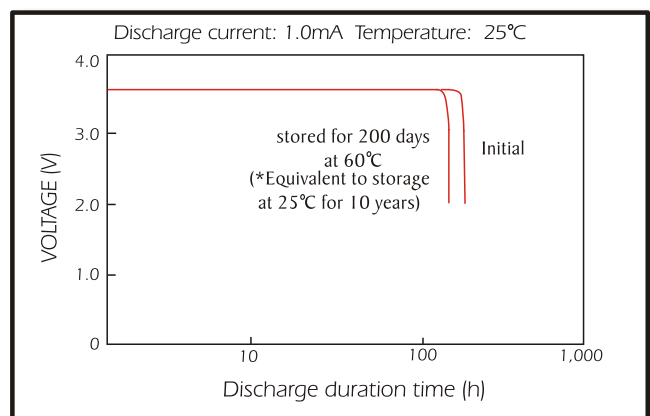
## AVAILABLE TERMINATIONS

Suffix -/P Tinned Nickel Pins

## 3. CAPACITY VS. CURRENT



## 4. STORAGE CHARACTERISTICS



### EVE ENERGY CO., LTD.

Address.: EVE Industrial Park, XiKeng Industrial zone, Huihuan Town, Huizhou, Guangdong, China  
 Operator: (86-752)260 6966 Fax: (86-752)260 6033

<http://www.evebattery.com> Email: [sales@evebattery.com](mailto:sales@evebattery.com)

Latest version can be downloaded from the EVE website

May 2010